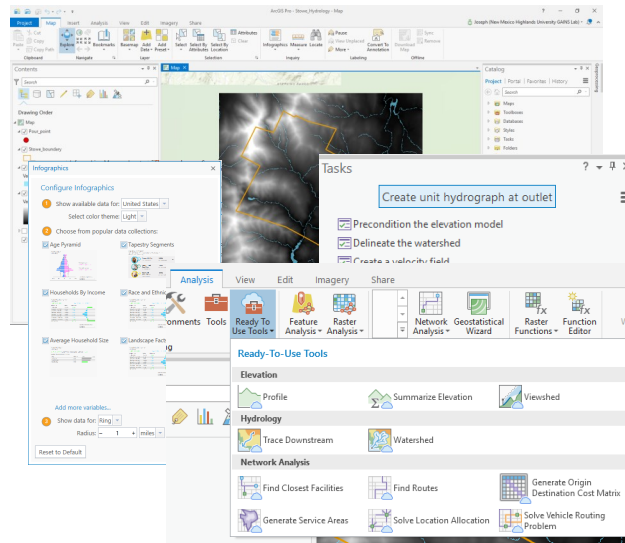
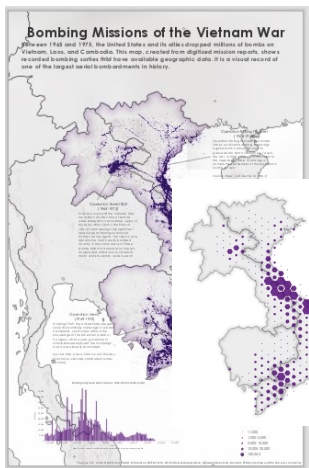
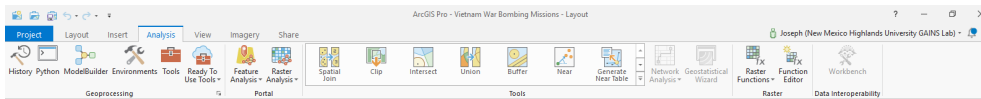


Get Going with ArcGIS Pro

Are you an experienced ArcMap User considering migrating to ArcGIS Pro? This workshop will help prepare you to be productive right away. You will learn essential ArcGIS Pro terminology and get familiar with the ribbon-based user interface. The workshop highlights key features of Pro including mapping, editing, and geoprocessing workflows in 2D & 3D. Attendees will experience new and streamlined capabilities that will help complete your GIS work more quickly and easily than ever before.



Space is limited and pre-registration is required. To register, contact Joe Zebrowski at 505-426-2146 or jpezrowski@nmhu.edu.

New Mexico Geographic Information Council Fall Workshop

Thursday, November 8, 2018 1:00 - 4:30 pm

Rotunda @ UNM Science & Tech Park
801 University Blvd. SE , Albuquerque, NM



The workshop will include both lecture and hands on sessions. If you would like to participate in the hands-on sessions, you will need a laptop with the recommended specifications described at:

<https://pro.arcgis.com/en/pro-app/get-started/arcgis-pro-system-requirements.htm>

You will need to download and install ArcGIS Pro. A free, 21-day trial version is available at <http://links.esri.com/pro/trial>

Workshop presented by

